

ZOO NEWS

CLEVELAND ZOO, OCTOBER, 1964

CLEVELAND ZOO NEWS

CONTENTS

Published by the Cleveland Zoological Society, Brookside Park, Cleveland, Ohio 44109 — 661-6500.

OFFICERS

Frederick C. Crawford	Board Chairman
Vernon Stauffer	President
Clyde T. Foster	Vice President
Lee C. Howley	Vice President
Robert M. Stecher, M.D.	Vice President
Hassel Tippit	Treasurer
Mark A. Loofbourrow	Secretary
Wayman H. Thomasson	Executive Secretary

TRUSTEES

Harold T. Clark — Honorary Life Trustee	
Raymond Q. Armington	C. B. McDonald
Raymond M. Barker	Robert C. McDowell
Thomas L. E. Blum	James E. Morgan, M.D.
Edgar S. Bowerfind	Ralph S. Mueller
Oliver Brooks	Maynard H. Murch
Mrs. Clarke E. Bruner	John P. Murphy
Thomas A. Burke	Judge Thomas Parrino
Harry F. Burmester	D. James Pritchard
Courtney Burton	Robert W. Ramsdell
Sumner Canary	Alfred M. Rankin
Donald S. Carmichael	William G. Rogers
Timothy J. Conway	Mrs. Wm. C. Scheetz, Jr.
Arthur Feldman	Mark C. Schinnerer
Robert W. Feller	Karl R. Schuele
Sheldon G. Ferbert	Louis B. Seltzer
Ellwood H. Fisher	Norman Shaw
Mervin B. France	David Skylar
I. F. Freiburger	Alfred I. Soltz
Vollmer Fries	Walter Sparling
Daniel M. Galbreath	Arthur Steinberg
Zoltan Gombos	Arthur W. Steudel
B. C. Goss	Mrs. Donald F. Stroup
Robert H. Gries	Thomas V. H. Vail
Dwight P. Joyce	W. W. Vandever
Vincent T. Kaval, M.D.	Harry Volk
Van H. Leichter	William O. Walker
Harold Luekens	Paul W. Walter
William B. Levenson	Wallace E. Wendt, D.V.M.
James F. Lincoln	Bishop John Whealon
Elmer L. Lindseth	Charles M. White
Raymond S. Livingstone	Birkett L. Williams
	Theodore M. Williams

EX-OFFICIO TRUSTEES

Ralph S. Locher	Mayor, City of Cleveland
Harold J. Lausche	Director of Public Properties
James V. Stanton	Pres., Cleveland City Council
Michael Zone	Chairman, City Council Committee, Parks and Recreation

COUNCILMEN

Arthur N. Kruczyk	Ward 6
Richard M. Harmody	Ward 9
Charles V. Carr	Majority Leader, Ward 17
Richard M. Masterson	Minority Leader, Ward 1
Mrs. Mercedes Cotner	Clerk of City Council

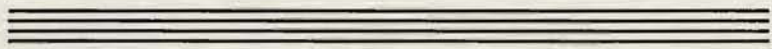
CUYAHOGA COUNTY COMMISSIONERS:

William P. Day	
Frank M. Gorman	Henry W. Speeth
William J. Racek	Mayor, Warrensville Heights, and City Managers Association

ZOO STAFF

Leonard J. Goss, D.V.M.	Director
Joseph P. Chery	Superintendent
Eugene M. Huhtala	Comptroller
Walter A. Kuenzli	Zoologist
Ronald G. Seeley	Assistant Superintendent
Charles R. Voracek	Public Service Director

Join FRIENDS OF THE ZOO TODAY



COVER:

A wizened female Rhesus Monkey sits on a ledge on Cleveland Zoo's Monkey Island. Monkey Island is probably the most popular single animal exhibit for Cleveland Zoo visitors. See Page 8 for story of the Rhesus Monkey.

—Photo by Paul M. Krapf, Lakewood, Ohio



WE ALL NEED YOUR HELP

Passage of City of Cleveland Bond Issue Number 5 would provide capital improvement funds for the construction of one or more of the following: Reptile Building, a Feline Building, Ape and Monkey Building and Small Mammal Building.

AN EDITORIAL . . .

A VITAL CLEVELAND ZOO ISSUE NEEDS YOUR ACTIVE SUPPORT

On November 3, 1964, City of Cleveland voters will be presented with the opportunity of voting for a \$6,000,000 Parks, Recreation, and Zoo Bond Issue. The Cleveland Zoo has a vital interest in this Issue inasmuch as the Zoo will receive one million dollars for capital improvements if Bond Issue #5 passes. The Cleveland Zoo has had *no* capital improvement funds since 1952 when Cleveland voters approved a Bond Issue which resulted in construction of the Pachyderm Building and general improvements in other Zoo areas.

Taxes will *NOT* be increased as a result of passage of the #5 Issue which requires a 55% majority vote.

Capital improvement needs at the Zoo are manifold: Reptile Building, Ape and Monkey Building, Feline Building, and Small Mammal Building are the prime requirements.

In order to continue the progress and development program of the Zoo's Master Plan it is mandatory that capital improvement funds become available.

We need the active support of every voter in getting BOND ISSUE NUMBER 5 passed. We urge YOU, YOUR FAMILY, YOUR FRIENDS, AND ACQUAINTANCES to campaign for the Parks, Recreation, and Zoo Bond Issue #5.

Cleveland would be a better place if all the Issues passed. Don't forget Issues 5, 6, 7, 8, and 9 on November 3.

KYW-Radio Stages "Zootenanny" on Monkey Island

A very successful Hootenanny on the Cleveland Zoo's Monkey Island was staged by KYW-Radio on Saturday, August 8, 1964. Producer of this first "Zootenanny" was KYW's Jim Gallant.

Talent appearing on the program included popular KYW disc jockeys Jerry G., Jay Lawrence, and Martin and Howard. Folk singers participating included the PD Preps, The Coachmen, Joe Gelarden and Ruth Reed.

Jerry G. conducted his Alligator Counting Club members in his "Alligator Song" as the program reached its climax. (To add realism to the scene, the Cleveland Zoo's 7-foot alligator was put in the Monkey Island

moat.)

The Island's 85 Rhesus Monkeys were put in their special room beneath the Island during the duration of the Zootenanny. The other regular occupants of the Island, the herd of Barbary Sheep, remained, but were quite bewildered by the assortment of microphones, speakers, musical instruments, singers and music which transformed Monkey Island into a huge sound stage.

Several thousand persons congregated around the Island to enjoy the program and although Monkey Island may never be the same again, the Zootenanny was a great success.



Performers of the first Cleveland Zoo "Zootenanny" on Monkey Island included, left to right, the PD Preps, Joe Gelarden, Ruth Reed, KYW Disc Jockey Jerry G., and The Coachmen who are on either side of another KYW Disc Jockey, Jerry Lawrence.



Jerry G., who is President of Cleveland's Alligator Counting Club, jumps into the waiting arms of Jay Lawrence when confronted with the Cleveland Zoo's 8-foot alligator during KYW-Radio's "Zootenanny."



Part of the crowd of more than 2000 folk song enthusiasts who ringed the Zoo's Monkey Island moat to enjoy a fun-filled afternoon of folk song entertainment.

CTS-ZOO BUSES GAILY DECORATED



CTS Zebra Bus attracted much attention during its summer route between Cleveland Public Square and the Cleveland Zoo.



CTS Tiger Bus was dark orange mixed with black stripes and white side and front markings.

—CTS Photos

Cleveland Transit System's two special Zoo buses (Rt. 20C, operating between Cleveland Public Square and the Zoo's West 25th Street entrance) received wide acclaim during 1964.

One bus was painted to resemble a Zebra; the other, a Tiger. Painting of the buses was done by two senior students of the Cleveland Institute of Art, Dennis Moore and Eugene Pawlowski.

Design of the unusual buses was the creation of Charles R. Voracek, Public Service Director of the Cleveland Zoo. Miss Arlene Butler, Director of Infor-

mation of CTS, made arrangements for the painting of the buses in the CTS Reed Garage.

About 30,000 Zoo visitors used the Zebra and Tiger buses during the 1964 season.

Someone remarked that Cleveland was probably "the only Zoo in the world that had a ten-ton Zebra and a ten-ton Tiger, each capable of devouring 51 persons."

Whoever heard of a carnivorous Zebra?

ZOO RENTAL STROLLERS AVAILABLE

A new visitor convenience has been added at the Cleveland Zoo.

Rental strollers are now available and have eased the burden of visitors bringing youngsters to the Zoo. The rental fee is 50 cents per stroller.

Popularity of the stroller service has

been overwhelming, and the 125 strollers have been given a hard workout in the short time they have been in use.

Additional strollers are planned for next year to meet the increased demand anticipated for this welcome service.



Being introduced to the Cleveland Zoo's stroller service and "Gi-Gi," the Orang-utan, at the same time are Diane Whitley, 18 months, and her mother, Mrs. Donna Whitley, 5461 Stumph Rd., Parma, Ohio. Stroller rentals provided a new visitor convenience during 1964.

—Photo by Paul Tepley, Cleveland Press

IN MEMORIAM

The Cleveland Zoological Society was deeply saddened by the loss of two of its trustees.

Monsignor Albert J. Murphy, 67, passed away on December 25, 1963; Rodney Sutton, 64, on February 14, 1964.



Monsignor Albert J. Murphy

Monsignor Murphy, pastor of St. Ignatius Catholic Church, had a deep personal interest in people, particularly the poor and the needy.

Msgr. Murphy was born on Cleveland's west side, was graduated from St. Ignatius High School in 1913 and from St. Ignatius College in 1916. He was ordained in 1921 after preparing for the priesthood at St. Mary's Seminary. In 1937 he completed work on a doctorate at Catholic University of America in Washington, D.C.

He was elevated to the rank of Monsignor by Pope Pius XII in 1945.

He was dedicated to the Catholic Charities of northern Ohio of which he was director for more than 10 years, and was vitally interested in the Catholic Resettlement Council of Cleveland.

The congenial Monsignor was greatly interested in the Cleveland Zoo and seldom missed a Trustees' meeting. He enjoyed seeing new animal exhibits and was fascinated with wild animals which lived at the Cleveland Zoo.

Rodney Sutton was born in Massillon, Ohio, on August 5, 1899. He graduated from Western Reserve University Law School in 1923 and was admitted to the bar the same year. He became Sports-Editor of the Cleveland Press and City Editor of the Cleveland Times, and then entered public relations work in 1926. He was vice-president of Miskell & Sutton, Inc., a public relations firm.

Mr. Sutton served in both World Wars and was on the Staff of Fleet Admiral Chester W. Nimitz during World War II.

He joined the public relations firm of Hill & Knowlton in 1946 and was senior counselor of the firm at the time of his death.

Mr. Sutton was active in the publicity campaigns of countless Cleveland endeavors, among which were the Great Lakes Exposition of the 1930's, the Metropolitan Opera, the Cleveland Orchestra, and many conventions. He spent a great deal of time in Boy Scout activities and served in local and national offices of that organization.

He was a member of the Mid-Day Club, Cleveland Chamber of Commerce, and Visitors and Convention Bureau.



Rodney Sutton

As a Trustee of the Cleveland Zoological Society, Mr. Sutton was vitally interested in the Zoo's development and assisted in a number of publicity programs designed to acquaint the public with the educational, cultural, and recreational aspects of the Zoological Park.

ZOOLOGIST'S ZOO-LOG

THE RHESUS MONKEY

(*Macaca mulatta*)

By WALTER A. KUENZLI, Zoologist

Close your eyes . . . now, visualize "a monkey" — that's right — a monkey. Chances are, what you'll see through your mind's eye looks an awful lot like a Rhesus Monkey. Yes, the zoologist's "monkey", the zoo-goer's "monkey", the researcher's "monkey", perhaps the most monkey-like "monkey" of all, is that coarse, insulting, mocking, exasperating, incorrigible, irreverent — yet indispensable — ruffian, the Common Rhesus!

Since earliest times, Man and the Rhesus have regarded each other suspiciously, often at very close proximity. The Hindus of India class the roguish Rhesus as an inferior being, but at the same time grant him the sanctity and respect reserved for a low order of deity — and give him unbelievable freedom from molestation. The Rhesus Monkey is the species which comes the closest to being truly "domesticated", yet no Rhesus is ever completely tame or the least bit submissive.

Nearly every zoo, menagerie, and animal exhibit in the civilized world has kept a Rhesus Monkey at one time or another. The Rhesus is surely the commonest and best known monkey in the world.



The Rhesus Monkey is an inquisitive and highly intelligent animal. Here, one of the Cleveland Zoo's Monkeys investigates a large sheet of paper he found in the Monkey Island moat.

—Photo by Paul M. Krampf, Lakewood, Ohio

The Cleveland Zoo probably had Rhesus Monkeys in Wade Park prior to the turn of the century. We don't know for sure—our oldest records merely refer to "monkeys" in the collection—but we suspect the commonest species of all was among the first to be publicly exhibited in Cleveland.

Rhesus Monkeys came to the Cleveland Zoo in a big way with the birth of our famous Monkey Island—the present home of a thriving Rhesus colony. Fashioned during "the depression" by WPA labor out of materials salvaged from the old Superior viaduct and the wreckage of the Ajax Building, a stone mountain was raised on Big Creek's flood plain in beautiful Brookside Park. The island, 100 ft. wide by 150 ft. long, is surrounded by a 20 ft. wide water moat. When Nathan L. Dauby, President of the May Company Department Stores, announced that his firm would purchase 150 Rhesus Monkeys to populate the Island, the Island's initial success was assured.

With appropriate ceremony, the Island was dedicated on Sunday, June 21, 1936; and after proper veterinary examination, the Island's first Rhesus Monkeys were released to public view.

The wild Rhesus is found at home in most of India and much of adjacent Southern Asia. These monkeys may be called "Bengal Monkeys" after the section of India where they are extremely plentiful, or by the Hindu name, Bandar, the name used by Kipling in his classic *Jungle Book*.

Rhesus Monkeys prefer open country and, though they climb readily and well, spend much of their time on the ground. They always live in large troops consisting of animals of both sexes and all ages. Troops often stay near towns and villages; these monkeys are usually plentiful in and around Hindu temples

(continued on page 10)



A young Rhesus Monkey looks beseechingly for Zoo visitors to toss some tidbits like peanuts, bread, apples, or cookies.

—Photo by N. J. Ochocki, Maple Heights, Ohio

RHESUS MONKEY (continued)

where they are assured of receiving handouts.

In Kashmir, they live in the Himalayas at 10,000 feet; and a race in Szechwan, China has been recorded at 13,000 feet. Monkeys that live in cool climates or in mountainous regions grow a luxuriant coat of fur for protection during the winter. Some mountain troops of Rhesus Monkeys descend to pine forests at 8,000 feet to spend their winters.



A mother Rhesus Monkey with her youngster riding piggyback style menacingly warns other monkeys to keep their distance. The mother Rhesus Monkeys are extremely protective of their infants and many quarrels result from this trait.

—Photo by N. J. Ochocki, Maple Heights, Ohio

Unlike the great majority of monkeys, Rhesus Monkeys don't particularly mind cold weather. Our colony lives on its Island the year around. Inside the Island they have a room which is kept at about 40° F. but the monkeys are allowed to go out every day that there is no ice on the water in their moat.

Rhesus Monkeys are not pretty, but they do look like monkeys "ought to look". There is nothing about a Rhesus that suggests neatness or attention to grooming. A monkey in the process of shedding its coat can look positively ghastly. But they do groom themselves and each other — constantly! Contrary to popular belief, monkeys do not have fleas and lice; their incessant scratching is largely due to nervousness, and the picking process is involved with removing tiny bits of flaky skin much like human dandruff.

Adult male Rhesus Monkeys are big animals weighing up to 25 lbs. or more; and they are powerful, aggressive, and dangerous. Big males look decidedly baboon-like. As a matter of fact, Rhesus Monkeys, within their range, behave

and function much like the African baboons; there are no baboons in Asia.

The female Rhesus Monkey is smaller, weighing only 10-14 lbs. The sexes are colored alike and both sexes have hardened, cornified seat pads known as callosities. The rump around the callosities is hairless and vivid rose-red in color.

After a gestation of 130-180 days (usually 5-6 months) the single infant is born; twins are about as rare as in human beings. The infant Rhesus is a pitiable, yet comical sight to behold. Babies seem to be painfully scrawny and undernourished; they have big ears and head, and a tiny, bony body. Adding to their sickly, anemic appearance, the skin of the underparts is a very pale bluish-white. Appearances can be misleading; the babies are tough little things, soon able to romp and play and bedevil the adult monkeys.

Rhesus Monkeys do not have the long, graceful tails typical of African and South American monkeys. And, as in the case of all Old World species, the tail is not prehensile or grasping. In fact, their somewhat abbreviated appendages—about half the length of the body—seems to be more of a hindrance than an aid.

It can be said that, in truth, the Rhesus Monkey will eat anything that is edible. Zoo visitors are well aware of their penchant for peanuts, popcorn, chewing gum, and candy. Main diet items in the wild include seeds, fruits, insects, spiders, snails, frogs, lizards, and literally anything else they can find or catch. In rural India, these brazen rowdies habitually raid native fields and

(continued on next page)



Rhesus Monkey mothers nurse their young for the better part of one year. Babies are weaned before their mothers bear young again.

gardens after dawn and just before dusk. Popular and religious sentiment dictates that the natives voice only weak protestations. The ancient Chinese, duly impressed with the Rhesus' wolfish feeding habits, felt sure that these animals had no stomachs and digested their food by jumping up and down.



Contrary to what many Zoo visitors believe, Rhesus Monkeys swim well and often go into the moat to pick up peanuts and other edible visitor-tossed offerings which fall short of the Island.

Rhesus Monkeys swim well and willingly, using an overhead breast stroke. Water alone offers no barrier to the Rhesus. Our monkeys would escape by swimming across their moat and merely clambering out were it not for the inwardly pitched 5-foot wall above the water line of the surrounding moat.

Anyone who has spent time watching our Monkey Island crew in action will be familiar with the Rhesus' behavioral traits. These are restless monkeys, always on the move. They are naturally pugnacious, always quarreling, scrapping, and fighting. And they are never vocally quiet. A troop of Rhesus Monkeys is a veritable cacophony of squealing, screaming and chattering animals.



Mother Rhesus Monkey helps her baby to a drink of water.

No one need see the results of specially conceived monkey I.Q. tests to realize that the Rhesus is an intelligent animal. Psychologically, the Rhesus is very human indeed. It clearly demonstrates its feelings through a multiplicity of facial expressions. When the Rhesus is angered, its face turns a distinct red color.

In human terms, the Rhesus is certainly the most important Primate next to Man. Throughout the development of modern medicine and scientific research, the Rhesus has served as a stand-in for man time and time again. Every drug imaginable is thoroughly tested on monkeys before it is used in human tests. The so-called Rh blood factor takes its name directly from this monkey. Rhesus Monkeys were key ingredients in the research which brought about the Salk polio vaccine. Rhesus Monkeys were seasoned space travellers before the first human astronaut went aloft.



Rhesus Monkey mother cuddles her youngsters in near-human display of mother love.

—Photo by Paul Krapf, Lakewood, Ohio

One reason why the Rhesus is such an ideal zoo animal is that he is a born entertainer—a natural show-off, a scene-stealer; often too much so. Take the case of the circus owner who, after a great expenditure of time, effort, and money, was able to secure a Rhinoceros. The first day the Rhino went on exhibit, the owner proudly entered the menag-

(continued on next page)

RHESUS MONKEY (continued)

erie tent only to find 3 people gawking at his prized Rhinoceros while a crowd of 300 was jammed in watching the antics of \$40 worth of Rhesus Monkeys!

Even though human encroachment into their territory and incessant trapping for export have certainly reduced the numbers in the wild, Rhesus Monkeys are still abundant. And the number of individuals in captivity at any given time is astonishing. A recent census of certain laboratory research facilities in the U.S. showed that in 119 colonies there were 9779 Rhesus monkeys being kept. Add to this the number in zoos, circuses, and those held by private individuals, plus those held by dealers in quarantine waiting to go to research institutions, etc., and the total number, in captivity, must be astronomical.

Today at the Cleveland Zoo the thriving, reproductive colony of Rhesus

Monkeys numbers over 90 individuals. During the past 12 months nearly 30 Rhesus babies have been born. None of the original colonizers of our Island are alive now—Rhesus Monkeys may sometimes live to be nearly 30 years old, but none of our present Island inhabitants even approach that advanced monkey age. We feel certain, though, that the ancestral blood of the original Island inhabitants flows in the veins of our present population.

Although the Cleveland Zoo has the only pair of Bongos in captivity in the world, the world's largest captive herd of the exceedingly rare Nubian Ibex, plus rarities like Pygmy Hippos, Malayan Tapir, and Pere David's Deer, and one of the world's better all-around bird collections, more people visit time and time again to see the Rhesus Monkeys—our Number One Attraction.



Monkey Island with its Rhesus Monkeys and Barbary Sheep boils with activity all day long. The monkeys fight, play, jump, run, chatter and scream; the more subdued sheep view the monkeys with philosophical tolerance.

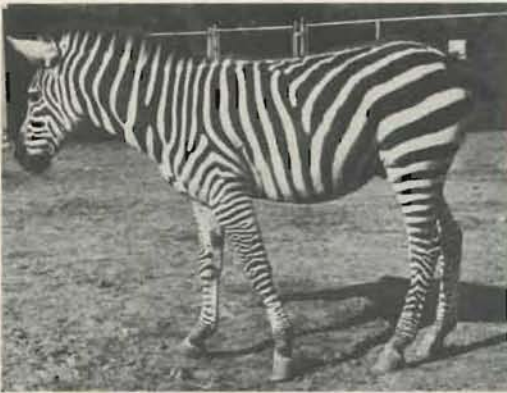
— Photo by Karl Rauschkolb, Cleveland Plain Dealer

REVCO DAY

Revco Day at the Cleveland Zoo was held on Tuesday, September 1st.

The Revco Drug Co., through its President, Mr. Bernard Shulman, and with the help of contributions to the Zebra Fund solicited from children in Revco Drug Stores throughout the Cleveland area, purchased a male Grant's Zebra for the Zoo. The campaign slogan was "A Zebra for the Zoo from Revco and You."

A "Name the Zebra" contest was conducted during the last 3 weeks of the promotion. Winner of the contest was Lynn Kickel, 7, of 21301 Nicholas Ave., Euclid, Ohio. Lynn won an English racing bicycle for submitting the name "Revvy".



"Revvy" the Cleveland Zoo's new male Grant's Zebra is put on public display for the first time on Revco Day, September 1, 1964.

"Revvy" was introduced to the visiting public for the first time in special Revco Day ceremonies at the Zoo at 2:00 p.m.

All Zoo Tour Train rides that day were complimentary through the courtesy of Revco Drug Co.



"Revvy" and "Betty Jane" appear to be one two-headed, seven-legged Zebra as they stand together during Revco Day ceremonies. Grant's Zebras are native to Africa where they live in large herds and are sought after as choice prey by the Lion.

Revco Drug Stores
and the children of Cleveland
Present
a Zebra to the Cleveland
Zoo

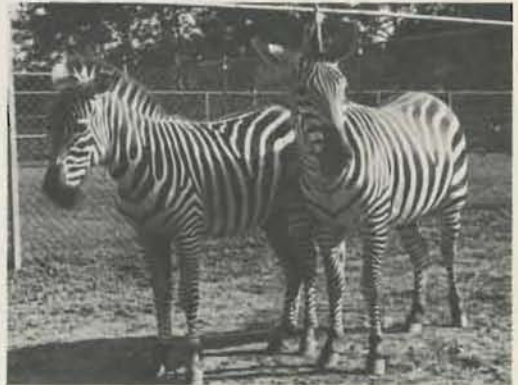


Tues. Sept. 1st 1964

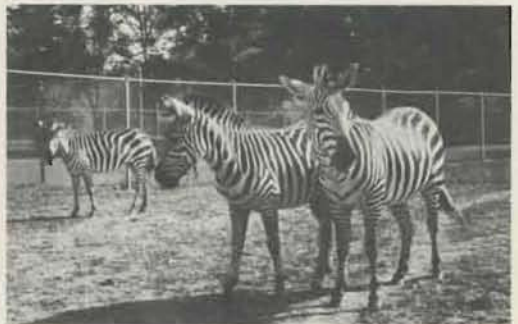
Bernard Shulman
President, Revco Drug Stores



Official document transferring title of the new Zebra to the Cleveland Zoo.



The Cleveland Zoo's female Grant's Zebra, "Betty Jane" (on the right) struck up an immediate friendship with "Revvy."



"Betty Jane" became so possessive of her new boyfriend she drove "Betty," her mother, away with a few bites and well-aimed kicks.

ZOO'S WHO

THE BEAVER

(*Castor canadensis*)

By CHARLES R. VORACEK, Public Service Director

Prehistoric relatives of the present day Beaver were gigantic animals measuring 7½ feet in length, nose to tail. The habits, social life, and engineering activities of these giant beavers were much the same as the Beaver of today. For some reason, however, in the course of evolution, the giant beaver, the world's first engineer, became extinct, and the only record of its existence is now found in fossil remains.

The Beaver is a most interesting animal; it is a large rodent with a heavy body, short legs, large webbed hind feet and broad, horizontally flattened scaly tail. The fur is very dense and varies in color from chestnut red to charcoal brown. Adult animals measure about 3 to 4 feet in total length and normal weight is from 40 to 50 pounds; extremely large individuals may weigh from 70 to 110 pounds; Beavers continue to grow throughout their normal life span of ten to twelve years.

The Beaver is found throughout most of North America from northern Mexico and northern Florida northward to the tree limit.

Beavers are the second largest rodents of the world, being surpassed in size only by the Capybara of South America. Living in and around water throughout its lifetime, the Beaver is adapted in many ways to its aquatic existence.



Adult Beaver (rear) and offspring enjoy the placid pool which is their home at the Cleveland Zoo.

The huge webbed hind feet enable the Beaver to paddle rapidly through the water. Special valves in the Beaver's nose and ears automatically close when the animal goes under water. Oversized lungs and liver permit Beavers to carry enough air and oxygenated blood to remain underwater for 15 minutes. Its dense fur keeps the Beaver comfortable even in icy waters. The fur is constantly combed and oiled to keep it waterproof; special claws on the two inner toes of the hind feet are used for this grooming procedure.



The Beaver appears out of proportion with the contour of the back and rump rising in moundlike fashion toward the rear.

The Beaver's tail is a multi-purpose organ. It serves as a rudder when swimming, and as a prop to give the animal support and leverage when a tree is being cut. By slapping his tail on the water's surface the Beaver also signals danger, or expresses anger or disgust.

Beavers ordinarily build lodge-houses for their residences. The lodge-house is constructed near deep water so that tunnels may open under ice in winter. Beaver lodges are made from sticks, stones, boughs, logs, and mud. Plastering of walls is done with mud. Sticks and mud are added continually during

(continued on next page)

BEAVER (continued)

the period of occupancy and an old lodge may be as much as seven feet high and thirty-five feet in diameter. There is just one large room in the lodge; it may be three feet high and four to five feet across. Occupancy may be by a single individual, but more commonly by a colony consisting of a father, mother and two generations of youngsters.

In order to insure that the lodge and surrounding area is covered by water at least 2 to 3 feet deep all year round, the Beaver constructs dams across rivers or streams. Dam construction is not necessary for Beavers living in deep water ponds or lakes where the water level remains deep the year around.

Construction of the dam is no small chore. Sticks and poles, two to six feet long are laid side by side parallel to the course of the stream. The sticks are fixed in place and weighted with stones, mud, and vegetation. As the dam is built higher, the Beaver reinforces it with mud and leaves. Leaks in the dam are stopped up on the upstream side and eventually the structure becomes most

efficient in building up the level of the water behind it. Water-logged leaves and debris carried by the stream help to strengthen the face of the dam and make it more waterproof. No two dams are ever exactly alike; some are straight, some curved, and some zigzagged. Most dams are 3 to 5 feet high and less than 300 feet in length.

Cutting of trees by Beavers is done for a number of reasons: wood is required in the construction of dams and lodge-houses, and the staple food of the Beaver is the bark of trees, particularly aspen, cottonwood and poplar.

To get an ample supply of tree bark, Beavers cut down numerous trees, and after consuming the bark the remaining wood is usually used for construction or maintenance purposes. Beavers vary their main diet of bark with a menu of aquatic plants, grass, roots, herbs, and shoots of plants and shrubs.

The tree cutting is done with the lower incisor teeth; the upper incisor teeth serve as levers during the cutting process. A five inch willow tree can be

(continued on next page)



Beavers at the Cleveland Zoo get a diet of bread, vegetables and special pellets. Beavers pick up food with front paws and hold it to their mouths. Note how tail is used as support.

BEAVER (continued)

cut down in three minutes. The method of cutting is similar to that used by men with axes. A Beaver selects a tree, rears on its hind legs, braces itself with its tail, and cuts a notch from the trunk. About three inches below the first cut, the Beaver tears out the chunk of wood. If the tree is small, the cuts are all made on one side; a larger tree may be cut from two sides, and an exceptionally large tree may be cut all the way around. Beavers do not control the direction in which a tree falls after it is cut. When the tree starts to fall, the Beaver runs. Occasionally Beavers are killed by the falling trees they have cut down!

In the fall in areas where thick ice would cut off their food supply, Beavers gather and store food for the winter by cutting logs and jamming them in the mud at the bottom of the pond or by piling rocks on top of the logs to prevent them from floating. This winter pantry serves the Beaver well when the icy grip of winter has frozen over the surface of the pond.

The mating of Beavers occurs during January and February. The usual litter of young, born in late April, May or June, is three or four in number. Unlike the young of many other rodents, the Beavers have their eyes open and a body covered with soft fur; it is a miniature replica of its parents. A Beaver is able to swim shortly after its birth and needs no swimming lessons once it is in the water.



Births of Beavers in captivity are rare. This one was born at the Cleveland Zoo in June, 1964.



Beaver's broad, flat tail is used for support, as a rudder in swimming, and as a signal device to warn of danger or to express anger or disgust.

Beavers remain with the parents until they are two years old. Then they are driven away by their mother who is anticipating the birth of the next litter.

Vocal sounds vary from soft chatters to whines and loud cries. Angry Beavers hiss.

Beavers have musk glands located in the rear of the abdomen. Beaver musk was once sold for medicinal purposes. Prices of up to \$20 per pound were paid for the glands. Musk and musk glands of the Beaver are commercially valueless today.

Besides man, the Beaver's major enemies are wolves, coyotes, bears, wolverines, pumas, lynxes, and bobcats.

The fur trade in the 17th, 18th, and 19th centuries nearly wiped out the Beaver as a species. The Hudson Bay Company alone sold over three million Beaver pelts on the London market between 1853 and 1877. The Beaver pelt became a basis of value at trading posts in North America. One pelt could be used to purchase a pound of tobacco, a one-pound kettle or one large and one small hatchet. Six skins would purchase a lace coat and the purchase of a long rifle took 12 high quality pelts.

When the threat of extinction was imminent, the Beaver was afforded governmental protection and the species has made a good recovery in most of its original range. In some instances its comeback has been too successful, much



The Beaver uses wood for many purposes. This Beaver carries a small tree trunk to his pantry; the bark has already been stripped and eaten. The Beaver is quite strong and can lift fairly heavy pieces of wood out of the water with his teeth and front feet.

to the distress of farmers and ranchers. Removal of overpopulous Beavers is usually done by State Fish and Game Departments. Beavers are trapped and then released in areas where Beaver dams will serve a useful purpose such as prevention of soil erosion or the build up of reservoirs in areas subjected to periodical droughts.

Beavers are now numerous enough so that trapping is allowed in Canada and some states in the United States. About 175,000 Beaver skins are now marketed annually. Primary use of pelts is for coats, collars and fur trimmings. The present day price of a good Beaver pelt is about \$35.00.

The Cleveland Zoo's Beaver colony was increased in 1963 when the State of Ohio donated a trapped colony of two adults and four juveniles which had built dams that caused flooding of valuable farmland in southeastern Ohio. With the arrival of the new family group, young adult pair of Beavers were

shipped to another Zoo. Incompatibility and bloodshed would have resulted between the two families. The current colony of four Beavers is faring well, and although it lived just two weeks, a baby was born in June, 1964. Births of Beavers in captivity are extremely rare occurrences and it is hoped that next year the parent Beavers will be successful in raising youngsters.



A truly aquatic mammal, the Beaver spends a great deal of time in or under water.



Artificial dam built of concrete saved Cleveland Zoo's Beavers a great deal of work. With all their requirements provided, the Zoo's Beavers are not as busy as Beavers in the wild.



Beavers are natural engineers; the Cleveland Zoo colony piles logs against concrete wall.

FRIENDS OF THE ZOO

November 17, 1963 thru September 27, 1964

DONOR

Cleveland Electric
Illuminating Foundation
Cleveland Foundation
Frederick C. Crawford
Arthur Feldman
Clyde T. Foster
Robert Gries
Joseph A. Leisman
C. B. McDonald
Vernon Stouffer
W. W. Vandevier
Wallace E. Wendt, D.V.M.
C. M. White
Birkett L. Williams

SPONSOR

Wayne J. Albers
Aluminum Co. of America
R. Q. Armington
Mrs. Lucy I. Astrup
E. H. Augustus
Joanna Baginski
Raymond M. Barker
D. Lee Bassett
Mr. and Mrs. William W.
Baum
Elizabeth B. Blossom
Sam C. Bornstein
Mrs. Brigham Britton
Mr. and Mrs. Oliver Brooks
Harry F. Burmester
Carling Brewing Company
Webb Chamberlain, M.D.
Mrs. Harold T. Clark
Mr. and Mrs. S. A. Crabtree
Jerome Ferville Daube
Mrs. Cyril P. Deibel
Ernest F. Donley
East Ohio Gas Company
Cyrus S. Eaton, Jr.
Sam W. Emerson
Mrs. S. H. Everett
Mr. and Mrs. Frank Fatsie
Firman Fund
E. H. Fisher
Mr. and Mrs. Robert S.
Friedman
Mr. and Mrs. C. M. Gardner
Dr. and Mrs. Wm. G.
Gilger, II
Mrs. L. Paul Gilmore
Mr. and Mrs. T. Keith
Glennan
D. M. Glover, M.D.
Mr. and Mrs. S. Wynn
Goodman
Dr. and Mrs. Charles M.
Greenwald
Mr. and Mrs. Robert D. Gries
Albert E. Hagedorn
Newman T. Halvorson
The Hankins Foundation
Louis G. Hehman
Mrs. Lawrence Hitchcock
Meacham Hitchcock
Royal M. Hochner
Mrs. John H. Hord
Joanna Hutchinson

SPONSOR (continued)

James D. Ireland
Kate Ireland
R. L. Ireland
Ervine D. Jaworski
Beverly Jenkins
Raymond C. Johnson
Ruthella Jones
Carl F. Jordan
Dwight P. Joyee
E. H. Kanzenbach
Vincent T. Kaval, M.D.
Mrs. Bert Keller
Mr. and Mrs. W. Griffin
King, Jr.
Mrs. Woods King
Edwin O. Klaas
Robert G. Knapp
Samuel B. Knight
Mrs. Betty Kramer
Lenihan, Gorton & Company
Margaret Lewis
Lion Knitting Mills Co.
Lubrizol Foundation
C. R. Lulenski, M.D.
Eleanor E. Luthard
Massachusetts Mutual Life
Insurance Co.
H. F. Meyer
Annette Miller
Nickel Plate Elevator Co.
Maurice C. Norris
North American Mfg.
Company
Prescott Foundation
Alfred M. & Clara T.
Rankin Fund
Mr. and Mrs. Albert Ratner
Mr. and Mrs. Robert S.
Reitman
Richard T. Reminger
S-P Manufacturing Corp.
Mr. and Mrs. Charles W.
Saunders
The Sears Family
Foundation
Sherwick Fund
Mr. and Mrs. Kent H. Smith
South Waite Foundation
W. S. Sparling
Mr. and Mrs. John G. Staudt
Mrs. J. R. Stewart
Mr. and Mrs. David W.
Swetland
Mr. and Mrs. Wm. C.
Treuhaft
Mrs. Lawrence M. True
Trust Fund of William H.
Evans
John Wade
Mr. and Mrs. Alan R.
Walden
Paul W. Walter
Joseph Weissfeld
Sidney W. West
Bernice J. Wolf
The World Publishing
Company

ANNUAL

E. W. Ackerman
Aldridge Industrial Oils, Inc.
David E. Armington
Stewart F. Armington
Walter C. Astrup
Ruth & Elmer Babin
Foundation
Barber, Magee & Hoffman
John W. Barkley
Henry T. Barratt
Harvey N. Barrett, Jr.
Norma E. Battes
Mr. and Mrs. William W.
Baum
Mr. and Mrs. T. R. Beatty
Mrs. Marguerite S. Bellamy
Mr. and Mrs. George E.
Bennett
Dr. and Mrs. Norman E.
Berman
Ralph M. Besse
Paul J. Bickel
Mrs. John Bindofer
Blessed Sacrament School
Charles B. Bolton
Walter P. Boos
Ezra K. Bryan
Alexander F. Bunts, M.D.
Anna E. Burgess
Richard M. Burk
Robert S. Burton
Dr. Malcolm F. Campbell
Mr. and Mrs. George S.
Case, Jr.
Frank F. Catalano, M.D.
Norma B. Cherdron
Lester Chorpeneing
Clark Restaurant Company
Nellie A. Clarke
Cleveland Heights High
School
Cleveland Wire Cloth and
Mfg. Co.
Mrs. J. W. Coleman
Mrs. Robert H. Collacott
Clarence L. Collens
Dorothy R. Colquhoun
Warren H. Corning
Charles R. Couch
Mr. and Mrs. J. R. Cox
Dr. George Crile, Jr.
F. H. Critchfield, Jr., M.D.
Frederick S. Cross, M.D.
Louis D. Cull
Jerome N. Curtis
Mrs. Raymond F. Dacek
Mrs. Edward C. Daoust
Victor Davidson
E. H. DeConingh
Mary Jane Deering
Mrs. John B. Dempsey
Mrs. John Des Prez
Mr. and Mrs. M. R. Dickey
Carl R. Dietsch
David Dietz
Mrs. J. F. Donahower
(continued next page)

ANNUAL (continued)

The Wm. Downie Company
 G. Brooks Earnest
 Mabel M. Eastman
 Mrs. H. W. Eastwood
 George H. Ely
 Mr. and Mrs. Herbert J. Farr, Jr.
 Joseph R. Fawcett
 A. W. Fenton Company, Inc.
 Mrs. Guv B. Findley
 Harold P. Finney
 Hazel D. Fitzgerald
 Mrs. W. T. Fleming
 Flesheim Foundation
 Paula M. Fliedner
 Mrs. Walter L. Flory
 Helen M. Focke
 D. R. Forrest
 Esther L. Frazier
 Daniel B. Freedman
 Barry Friedman, M.D.
 Mr. and Mrs. W. D. Fulton
 Mr. and Mrs. Arthur E. Galloway
 Ruth Garry
 Dr. and Mrs. Curtis F. Garvin
 Mrs. E. C. Garvin
 Mrs. F. W. Gehring
 Alfred J. Gericke, M.D.
 Mr. and Mrs. Howard W. Geyer
 E. F. Gibian
 Alfred E. Gibson
 R. A. Giesey
 Mr. and Mrs. Richard C. Gilman
 Mr. and Mrs. Robert M. Ginn
 Dr. Richard P. Glove
 Samuel Goldhamer
 Mr. and Mrs. A. J. Goodman
 T. L. Goudvis
 E. E. Griese
 The Griesinger Foundation
 Philmore J. Haber
 Dr. and Mrs. William R. Hallaran
 Edwin G. Halter
 Hilda L. Hammond
 Handcraft Metal Shop, Inc.
 Mr. and Mrs. E. A. Hanes
 Mrs. Perry G. Harrison
 H. B. Harsch
 W. J. Harshaw
 Mr. and Mrs. Ben M. Hauserman
 George W. Hazlett
 C. E. Heil
 Robert F. Hennig
 Charles H. Herndon, M.D.
 Mr. and Mrs. Marvin D. Hicks
 Frank E. Hodgdon
 James C. Hodge
 John B. Hollister, Jr.
 Home State Farm Publications, Inc.
 Kenneth P. Horsburgh
 William R. Hough
 Dr. and Mrs. L. F. Huffman
 Mr. and Mrs. Thomas S. Ireland
 William E. James, M.D.

Mrs. I. Lamson Jennings
 Mr. and Mrs. Harry L. Jenter
 Emma W. Johnson
 Eben H. Jones
 Mrs. F. J. Jontzen
 John A. Kaleal
 Julian Kassen, M.D.
 Jane C. Kinder
 J. D. Kling
 Kluck Brothers
 Lyle P. Klug
 Dr. and Mrs. W. J. Kolff
 C. R. Kubik
 Gerhard M. Kuechle
 Mrs. Oscar Lange
 John Larsen
 Robert B. Larson
 Herbert J. Laub
 Mr. and Mrs. H. H. Laundry
 Mrs. E. E. Lehmann
 Levy Foundation
 Mrs. Frank R. Lonero
 Mr. and Mrs. Dave Margolis
 Mrs. Albert W. Marten
 Mrs. Domenico Martignone
 Clayton C. Matowitz, M.D.
 Mr. and Mrs. W. M. May
 Mrs. Donald S. McBride
 Karl B. McEachron, Jr.
 Mildred L. McPhee
 Mr. and Mrs. Gilbert Mendelson
 Edward S. Merrick
 Leon Gordon Miller
 William H. Milliken
 Milner Electric Company
 Sylvia Mocnik
 Mrs. M. A. Monaghan
 J. B. Mooney
 Guy R. Moore
 Joanna L. Muntyan
 James L. Myers
 Mrs. Mark J. Nagusky
 Rev. Robert B. Navin
 L. W. Neumark
 Frank C. Newcomer
 Mr. and Mrs. Sterling Newell, Jr.
 Miss C. A. Nichol
 Frank E. Nielsen, M.D.
 Ellen Nixon
 Ohio Valley Insurance Company
 Mr. and Mrs. Lockwood Oliver
 The Opdyke Family
 Mr. and Mrs. Ralph H. Osborne
 Roy C. Ossman
 John F. Patt
 Jennie L. Phillips
 W. B. Phillips
 W. G. Pilot
 E. C. Pope
 Mr. and Mrs. Frank H. Porter
 Mrs. L. W. Potts, Sr.
 Ann Elizabeth Prescott
 Products Packaging, Inc.
 Charles E. Quay
 H. A. Raymond
 Mr. and Mrs. Earl R. Richter
 W. R. Roberts
 Henry H. Roenigk, Sr., M.D.
 Emanuel M. Rose

Mrs. G F. Rucker
 Jon R. Ruhlman
 Mr. and Mrs. T. H. Rupert
 E. C. Ryan
 John Salmon
 John H. Saunders, M.D.
 Mrs. Charles Say
 Gerald B. Schaffer
 William L. Schlesinger, M.D.
 Mr. and Mrs. Omer W. Schroeder
 Harry T. Sealy
 Walter L. Seelbach
 Warner Seely
 Mrs. A. H. Seibig
 Robert C. Sessions
 Ruth M. Shane
 Dr. and Mrs. J. D. Shapiro
 Mr. and Mrs. J. James Sheedy
 Mr. and Mrs. Henry B. Shepherd
 Jack C. Sheppard
 Mrs. E. J. Siller
 Mr. and Mrs. W. G. Simon
 Mrs. Harry D. Sims
 Chester K. Smith
 Franklin G. Smith
 Mrs. Robert W. Snyder
 Frances R. Stock
 Irving I. Stone
 Mrs. Lillian K. Stone
 Mr. and Mrs. Fred Swaddling, Jr.
 Rt. Rev. and Mrs. B. D. Tucker
 University School Day Camp
 O. G. Voss
 Mrs. Ernest W. Wagley
 William G. Waltermire
 Mrs. Jack G. Wardley
 Francis M. Warren
 Richard H. Watt
 R. A. Weaver
 Elden C. Weckesser, M.D.
 Mary A. Weidle, M.D.
 Edgar H. Weil
 Dr. and Mrs. Wm. C. Weir
 Mr. and Mrs. Louis Wells
 Harry S. West
 L. Gerard West
 H. E. Wetzell
 Mr. and Mrs. John R. Wheeler
 F. S. Whitcomb
 W. H. Whitmore
 Mrs. Katherine E. Williams
 The Williamson Foundation
 Lee Wilson Engineering Co., Inc.
 Wright Foundation
 Dr. James N. Wychgel
 Douglas O. Yoder
 Mr. and Mrs. Rollin T. Young

JOIN FRIENDS
 OF THE
 ZOO NOW



The Cleveland Zoo Administration-Education Center is located in one of the most picturesque areas of the Cleveland Zoological Park.

ADMINISTRATION - EDUCATION CENTER

Brand new at the Cleveland Zoo is the Administration-Education Center dedicated on June 11th.

The new building is the gift of the Leonard C. Hanna, Jr. Fund and is the first major construction at the Zoo since 1962 when the Lion and Tiger Veldt was completed.

Besides administrative staff offices, the Ad-Ed Center contains a multi-purpose room which will be used as an auditorium, as a science classroom for classroom groups of children visiting the Zoo, and as a meeting room for

civic, fraternal, and social clubs, and groups who wish to use the special facilities for a nominal fee.

The new building is situated in a wooded area overlooking the Waterfowl Sanctuary. Architectural design was by Schafer, Flynn & Associates. Contractor was Hamann Construction Co.

Harold T. Clark, Trustee of the Leonard C. Hanna, Jr. Fund, presented the building to Mayor Ralph S. Locher who accepted it on behalf of the City of Cleveland.



Limestone Polar Bears, the gift of Mr. Herbert Leisy, grace the front entrance of the new building.



The rear of the Administration-Education Center overlooks the Waterfowl Sanctuary.

CLEVELAND ZOOLOGICAL SOCIETY ELECTS NINE NEW TRUSTEES

At the annual trustees meeting following the dedication of the Zoo's new Administration-Education Building on June 11th, nine new members were elected to the Board.

In a special ceremony, Mr. Harold T. Clark was elected first Honorary Life Trustee of the Cleveland Zoological Society.

Other trustees elected were Attorney Alfred I. Soltz; D. James Pritchard, a Vice-President of Society National Bank; John P. Murphy, Chairman of the Board of The Higbee Company; Attorney Thomas L. E. Blum; Harold Luekens, accountant with Ernst & Ernst; Thomas Vail, publisher and editor of the Cleveland Plain Dealer; Auxiliary Bishop John F. Whealon of the Cleveland Catholic Diocese; and David Skylar, a Vice-President of Griswold-Eshleman Company.

MUSIC! MUSIC! MUSIC!

Three musical concerts were performed during 1964 at the Cleveland Zoo's Concert Shell near the Waterfowl Lake.

The first concert, on Saturday, May 23rd, featured the All-City High School Band composed of top-flight musicians from Cleveland High Schools. Selection of musicians for this band is made through competitive auditions each fall. The band was directed by Mr. Joseph Lanese, Supervisor of Instrumental Music, Cleveland Public Schools. Mr. Lanese was assisted by Mr. Edward Katz, West Tech High School; Mr. Richard Lidrbauch, Carl Shuler Junior High



The All-City High School Band Concert was the first musical program at the Zoo in 1964.

School; and Mr. William Moon, Harvey E. Davis Junior High School.

Among the selections played were "American Civil War Fantasy" by Bilik, Finale from Symphony in B Flat" by Fauchet, "Polka and Fugue" from Schwanda the Piper by Weinberger, and several marches.

The second concert was performed by the Cleveland Summer Orchestra on Sunday, June 28th.

Conducted by Louis Lane, the Pops Concert featured such well-known favorites as the "March Militaire" by Schubert, the Overture to "Die Fledermaus" by Strauss, "Pomp and Circumstance No. 1" by Elgar, selections from "Cinderella" by Rodgers, and "Gigi" by Loewe, and "El Capitan" and "Washington Post" marches by Sousa.

The final concert was held on Sunday, July 19th.

Also performed by the Cleveland Summer Orchestra, but with Michael Charry conducting, the concert included



The first of two Summer Pops Concerts performed by the Cleveland Summer Orchestra was held on Sunday, June 28, 1964. Ducks, geese, swans, and pelicans provided an animated display while the musical program was being conducted.

Introduction to Act III of "Lohengrin" by Wagner, "Capriccio Italien" by Tchaikovsky, "Irish Rhapsody" by Herbert, and selections from "My Fair Lady" by Loewe.

The two Cleveland Summer Orchestra Concerts were made possible through the courtesy of Society National Bank of Cleveland and Stouffer Foods.

In behalf of Society National Bank of Cleveland, Stouffer Foods, and the Cleveland Zoo, Mr. Ed Fisher, popular WJW-Radio personality, introduced the Cleveland Summer Orchestra and conductors Louis Lane and Michael Charry to the many thousands of Zoo visitors in the audience for the June and July concerts.

ZOO FLOOD

A torrential rainstorm on July 28th caused the Cleveland Zoo to be flooded by Big Creek. The sudden downpour caused the creek to rise some 3 feet above its banks and spill its murky waters into the Zoo.

Greatest damage was done to the Ape and Cat Building which has been flooded several times previously. The flood of 1959 killed nearly all the reptiles which were exhibited in the basement of the Ape and Cat Building. The area where the Zoo reptiles once lived had been converted into maintenance shops and the latest flood ruined much of the equipment and materials stored there.



Crest of flood passes through Zoo. In background Llama and Elands wade knee deep in water.



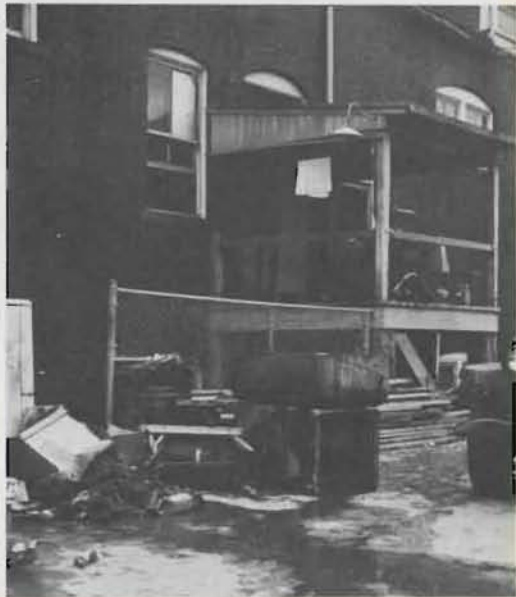
Flood waters rose 7 feet in basement of Cat and Ape Building. Tour Train Cashier's Booth was carried 300 feet downstream.

Fortunately, no animals drowned in the latest flood although a newborn Sitatunga Antelope had some rough going in deep water for a short period of time. Other animals experiencing high water as the crest of the flood passed through the Zoo were American Bison, Grant's Zebras, Beisa Oryx, Elands, Dromedary Camel, Llama, Brindled Gnu, and Guanacos.

Great quantities of mud and debris were left by the floodwaters and clean-up crews spent many hours in cleaning and restoration work.



The Cleveland Zoo's main parking lot and turnstile entrance area were transformed into a huge lake by the flash flood.



Aftermath of flood. Equipment, tools, supplies and food were destroyed in basement of Cat and Ape Building.

"GI-GI" CELEBRATES SECOND BIRTHDAY



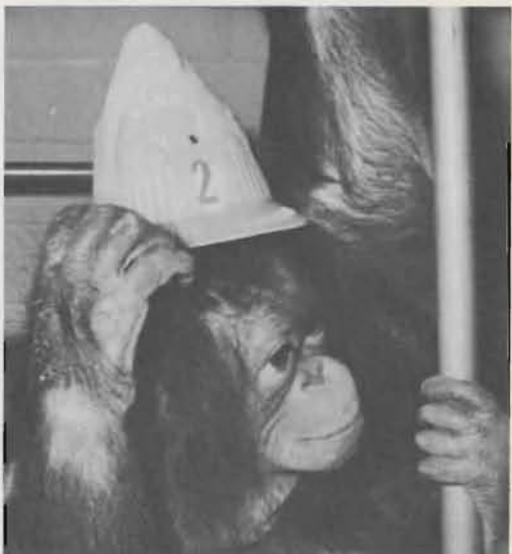
"Gi-Gi" all set to enjoy her second birthday party.



Mrs. Anna Wendt, "Gi-Gi's" foster mother, helps "Gi-Gi" to get acquainted with one of her presents.



"Gi-Gi" made short work of her birthday cake.



Trying her birthday party hat on for size, "Gi-Gi" appears to be in a festive mood.

—Photos by Robert Quinlan,
Cleveland Plain Dealer

The Cleveland Zoo's baby Orang-utan, "Gi-Gi", celebrated her second birthday on September 4th.

Her birthday party which included cake, cards, and presents, was attended by Zoo personnel and foster mother, Mrs. Anna Wendt. It was Mrs. Wendt, the Zoo veterinarian's mother, who cared for "Gi-Gi" for 8 months when "Gi-Gi" was left an orphan a few days after her birth. Mrs. Wendt returned

"Gi-Gi" to the Zoo in May, 1963.

"Gi-Gi" is growing well, and has increased her weight from 1½ pounds at birth to 32 pounds.

The youngster loves attention and her favorite activity is having someone hold one of her hands and swing her on the bars of her gym. She is very fond of human company and expresses great displeasure when her nursery visitors leave.

ATTENDANCE RECORD SET AT CHILDREN'S FARM

For the second time in 3 years, the Children's Farm of the Cleveland Zoo has set a new attendance record.

When the Farm closed on September 13th for the final day of the 1964 season, 131,331 visitors had been through the barnyard gate. The 1962 attendance figure was 115,706.

The Children's Farm was dedicated in 1959 and was the gift of the Cleveland Rotary Club.

This year another addition to the Farm was made when the Rotary Club donated 3 pear, 3 apple, and 3 cherry trees which were planted in the pasture area.

A number of Children's Farm publicity promotions took place during 1964:

From April 3rd through 10th, the Children's Farm was previewed at Severance Center Shopping Plaza in Cleveland Heights. Domestic farm animals were displayed in contact areas and children (some grownups, too) had the opportunity to hold, pet, and feed the cuddly lambs, rabbits, guinea pigs, goats, and pigs.

On May 16th a Children's Fashion Show, sponsored by the Higbee Company was staged in the pasture area of the Children's Farm.

Also in May, Fisher Foods conducted a "Name the Animals" Contest for children under 12 years of age. Animals to be named were 3 pigs and 3 lambs. First prize in each category was a family trip to the New York World's Fair.

Bobby Sossa, 6, of 3326 West 90th Street, Cleveland 2, Ohio, won first prize for naming the pigs "Porky", "Corky", and "George".

Douglas King, 6, of 3650 Greenwood Drive, Cleveland 24, Ohio, won first prize in naming the lambs "Daisy", "Pansy", and "Lambert".

A Fisher Foods employees' contest was conducted to name the Children's Farm calf and a goat.

First prize winners of portable television sets were Fisher employees, Bill Minadeo and Edna Antall.

All the domestic farm animals which had to be purchased for the Children's Farm this year were purchased for the Zoo by Fisher Foods.



Domestic Children's Farm animals like this lamb were on display in early April at Severance Center Shopping Plaza in Cleveland Heights. Fisher Foods purchased lambs, goats, pigs, rabbits, and a calf for the Farm this year. Cleveland Zoo attendant Mrs. Jane Vajda holds the lamb for children to pet in front of the Fisher store at Severance Center.



Domestic farm animals like this frisky goat provided Children's Farm visitors with many happy hours of petting, feeding, holding and viewing fun.

— Photo by Tony Tomsic, Cleveland Press



A handful of food purchased for a nickel from a vending machine at the Children's Farm provides a welcome snack for "Jenny" a Sardinian Donkey. From the expression on this young lad's face, he is enjoying the feeding operation nearly as much as the Donkey.

CLEVELAND ZOO EXHIBIT AT PARADE OF PROGRESS

One of the show-stealing exhibits at the Cleveland Parade of Progress Exposition held August 28 thru September 7, 1964, in Cleveland's newest convention hall under the Mall was the Cleveland Zoo's display of birds, monkeys, and giant tortoise.

More than 500,000 persons attended the Parade of Progress, and the Zoo's live animal exhibit was one of the most popular in the hall. Popularity of the exhibit was attributed to the fact that visitors could touch the monkeys and tortoise.



The Cleveland Zoo's exhibit at the Parade of Progress featured Toucans, Monkeys, and a Tortoise.



Giant Elephant Tortoise was great source of amazement for visitors to the Zoo's Parade of Progress Exhibit. Most frequently asked questions about the Tortoise were "Why isn't he in the water?" (He is a land tortoise); "How old is he?" (About 50 years) and "How much does he weigh?" (About 300 lbs.)



Three Woolly Monkeys like this one put on a great show for Parade of Progress visitors. Woolly Monkeys were the most popular animals in the Zoo's exhibit.

The three exhibits represented the bird, mammal and reptile classes of animals displayed at the Zoo. Printed labels identified the animals on display and Talking Story Books gave verbal accounts about the Zoo and its animal exhibits.

Zoo attendants passed out nearly 40,000 Zoo informational folders to Parade of Progress visitors.

In addition to distributing literature, the attendants cleaned, fed, and watered the animals, answered visitors' questions, and discouraged overzealous visitors from teasing and feeding the animals on exhibit.

SHEEP SHEARING DEMONSTRATION

A novel Children's Farm activity this summer was a sheep shearing demonstration conducted on four successive Sundays beginning on April 12th.

Keepers Steve Sandusky, Vince Rimedio, and Commissary Keeper Ed Stieber conducted the demonstration in the pasture area of the Children's Farm, and much to the delight of visitors, made shorn wool samples available on a first come, first serve basis.

It was welcome relief for the sheep to be rid of their heavy wool coats, and besides seeing an educational activity, visitors saw first hand an interesting demonstration which is very rare in the urban Cleveland area.



Keeper Vince Rimedio, assisted by Commissary Keeper Ed Stieber, demonstrates his skill in shearing one of the sheep at the Children's Farm. Wool samples were distributed to visitors.

CLEVELAND PLAIN DEALER SUNDAY MAGAZINE FEATURES ZOO

The Sunday, June 7th issue of the *Sunday Magazine* of the *Plain Dealer* was devoted exclusively to the Cleveland Zoo.

In addition to Zoo feature articles by Jan Mellow and photos by Dwight Boyer, the *Plain Dealer* also used photos submitted by amateur photographers.



Front Cover of Plain Dealer Sunday Magazine featured "Lulu", one of the Cleveland Zoo's adult female Masai Giraffes.

A photo contest was conducted for several weeks prior to the publishing of the special issue, and the winning photos appeared in the magazine. Out of the thousands of photographs submitted, the most popular Cleveland Zoo subject was the Children's Farm with a total of 119 photos. Giraffes were the second most popular subject with 114 photos entered.

NORWEGIAN CADETS VISIT ZOO

On August 20, eighty Norwegian Cadets from the Windjammer *Christian Radich* were entertained at the Cleveland Zoo.

A luncheon provided by Kenny King Restaurants was served in the Zoo's Multi-purpose Room of the new Administration-Education Center.

A special Tour Train tour of the Zoo followed the luncheon. A number of high school girls from suburban Cleveland schools joined the boys as escorts.

Many of the Norwegian boys stated that the Cleveland Zoo was the first

large Zoo they had ever visited, and they were greatly impressed by the large number of animals and the well kept grounds.

The *Christian Radich* was on a special goodwill voyage on the Great Lakes, and Cleveland was selected as one of the ports of call.

The Cleveland Seamen's Service arranged the Zoo visit for the boys who ranged in age from 14 to 18 years.



Miss Caroline Jarvis, editor of the International Zoo Yearbook, paid a visit to the Cleveland Zoo in the early summer of 1964. She left her London, England, home to visit several American Zoos and visited the Cleveland Zoo specifically to see the world's only captive pair of Bongo Antelopes. "Karen," the female Bongo, enjoyed having her head scratched by Miss Jarvis.



"Gi-Gi", 2-year-old Cleveland Zoo Orang-Utan, and Miss Mary Ann Winkel, Editor of the Fisher Foods "Champion" read a copy of "The Wonders of the Animal Kingdom", a picture stamp book successfully promoted by Fisher Foods for 7 weeks during the summer of 1964.

ZOO CANDIDS



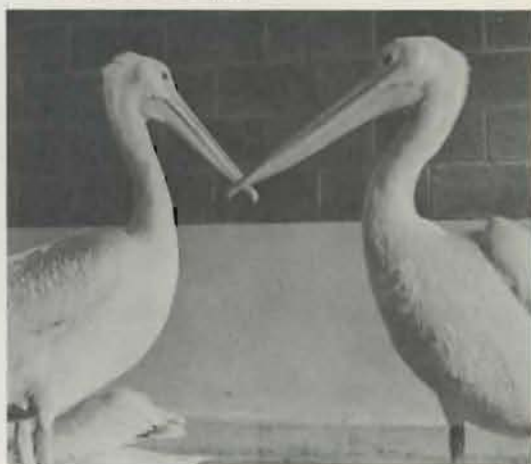
"And you know, Herman, it's just scandalous about that White-Tail Deer family up the street . . ." Male Pere David's Deer seems to be straining to hear the latest Zoo gossip. Special gate at moated Deer Park permits visitors to feed and pet these rare deer.



"You mean you walked a mile just to see me!" "Jimmy" the Bactrian Camel greets young visitor at moated Camel paddock.



"Where did you say that ant hill was? Down by the Pachyderm Building?" Giant Anteater from South America is on exhibit in the same enclosure with Kangaroos, Wallabies, Secretary Birds, Vulturine Guinea Fowl, and Kori Bustards.



"Your food bill couldn't have been that big!" A pair of White Pelicans arrived at the Zoo in early September. A total of five were received from Winnipeg, Manitoba, Zoo.



"Look at that good-for-nothing brother of yours, just lion around the house all day—he'll never grow up to be king that way."

In September, 1964, a trio of mole African Lion cubs were purchased from New York's Prospect Park Zoo. It didn't take them long to feel right at home in the outdoor moated veldt.



"I know I forgot to put my bathing suit on, sir, but if I just stay submerged everything will be okay." Young female Brazilian Tapir arrived in July and shares a pool with a Malayayan Tapir at the Zoo's Pachyderm Building.

— Photos by Tony Tomsic, Cleveland Press



Giant Red Kangaroo mother with "Joey" in the rumble seat. Two Giant Red Kangaroos and a Bennett's Wallaby were born during 1964.

— Photo by Tony Tomic
Cleveland Press

CRADLE ROLL



Barasingha Deer fawn made its debut at the Cleveland Zoo in late May.



Mantled Colobus Monkey was born in August. This is the third Colobus Monkey born at the Cleveland Zoo since 1962.



This American Bison calf, one of four born during 1964, is just hours old but knows quite well where the dairy bar is located.



Proud Hamadryas Baboon parents with their heir apparent born in May, 1964.



Patas Monkey was born in early March, 1964.



A May-born baby, this Sika Deer fraternizes with feathered friends, a pair of Jungle Fowl.

POTPOURRI

GOVERNOR'S CONVENTION



Dr. Leonard J. Goss, Director of the Cleveland Zoo, points out one of the Zoo's exhibits to Mrs. Philip H. Hoff, wife of Vermont Governor Philip H. Hoff. Wives and children of governors who attended the Governors' Convention in Cleveland during June were given a special tour of the Zoo.



Miss Marcia Babcock and Mrs. Roger Mennie, daughters of Montana Governor, Tim Babcock, enjoyed petting and feeding one of the Nubian Goat kids at the Children's Farm.



"Stamper" the Harpy Eagle was purchased for the Cleveland Zoo by the Eagle Stamp Company. The Eagle was exhibited in the Eagle Stamp Exhibit at the Parade of Progress Exposition. Nearly 50,000 entries were submitted in a "Name the Eagle" contest conducted during the Exposition. Harpy Eagles are native to South America where they prey on monkeys, macaws and other small birds, mammals and rodents. The Harpy Eagle has the largest talons of any bird of prey in the world.



"Napoleon", Cleveland Zoo's male Kodiak Bear, begs for a handout. This photo was submitted in the Plain Dealer photo contest.

— Photo by N. H. Long
Alliance, Ohio



"Siberia" the Cleveland Zoo's male Polar Bear shakes water from his fur. Dramatic effect is caused by the fact that the Bear was still in the pool.

— Photo by Tony Tamsic
Cleveland Press



A male African Lion Cub purchased from Chicago's Brookfield Zoo joined the other three male lion cubs in March. This young lion spends many hours each day lying on or next to this log in the Lion Veldt.

— Photo by Tony Tomsic
Cleveland Press

CLEVELAND ZOO NEWS
CLEVELAND ZOOLOGICAL PARK
CLEVELAND, OHIO 44109

Non-Profit Org
U. S. POSTAGE
PAID
Cleveland, Ohio
Permit No. 3570



"Lulu" and "Patches", Cleveland Zoo's female Masai Giraffes, have a snacktime guest, one of the wild pigeons that are found at the Zoo all year long.

— Photo by Tony Tomsic
Cleveland Press